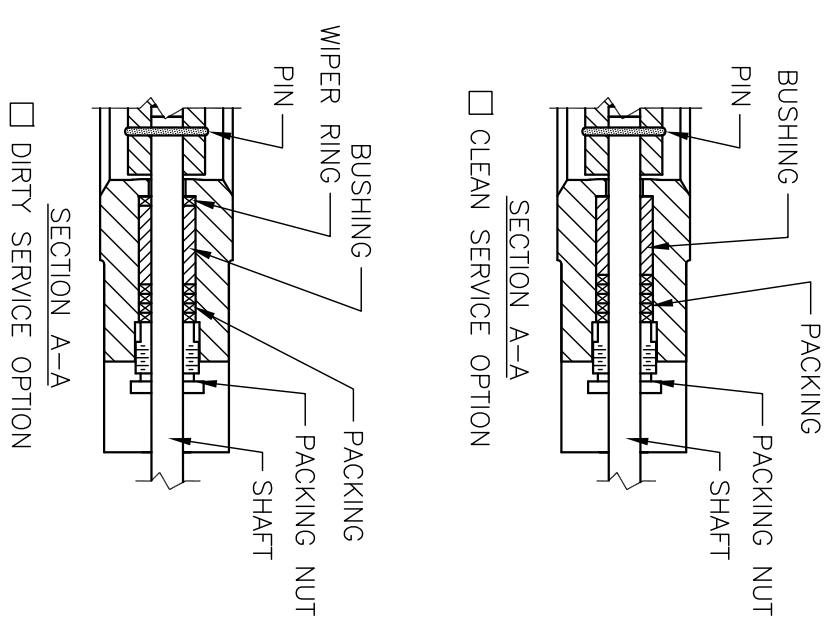


MATERIALS OF CONSTRUCTION	
XXX =	
BODY:	
DISC:	
SHAFT:	
BUSHING:	
PACKING:	
PACKING NUT:	
PIN:	



NOTES:
1. VALVE SHAFTS TO BE MOUNTED IN THE HORIZONTAL PLANE.

SIZE	ASSEMBLY NUMBER	VALVE DIMENSIONS										STANDARD SHAFT FLAT	
		A	B	C	D	E	F	H	G*	J*			
2	401-019-XXX	2.00	5.38	5.38	1.50	3.88	4.25	.500	1.25	0.343			
2-1/2	401-029-XXX	2.50	5.63	5.63	1.50	4.63	4.25	.500	1.25	0.343			
3	401-039-XXX	3.00	5.88	5.88	1.50	5.13	4.25	.500	1.25	0.343			
4	401-049-XXX	4.00	6.38	6.38	1.50	6.38	4.25	.500	1.25	0.343			
5	401-059-XXX	5.00	6.88	6.88	1.50	7.50	4.25	.500	1.25	0.343			
6	401-069-XXX	6.00	7.38	7.38	1.50	8.50	4.25	.500	1.25	0.343			
8	401-079-XXX	8.00	9.63	9.63	1.88	10.75	5.13	.750	1.25	0.531			
10	401-089-XXX	10.00	10.63	10.63	1.88	13.00	5.13	.750	1.25	0.531			
12	401-099-XXX	12.00	11.63	11.63	1.88	15.25	5.13	.750	1.25	0.531			
14	401-109-XXX	13.13	12.13	12.13	1.88	16.38	5.13	.750	1.25	0.531			

* LENGTH AND FLAT MAY BE VARIED TO MATCH ACTUATOR AND BRACKET REQUIREMENTS.
IF "G" AND "J" DIMENSIONS VARIES FROM TABLED STANDARD CONSTRUCTION,

REV.	DESCRIPTION	NO.	DATE	BY
C	ADDED OPTIONAL GREASE FITTINGS	551	8/9/13	SRT
B	STND MATERIAL CALL OUT, ADDED SHAFT DETAIL	545	9/1/10	SRT
A	CORRECTED MAT'L'S FOR 771 BODY WAS: 316	543	5/6/09	SRT
	RELEASED	450	12/30/97	SRB

ASSEMBLY NUMBER =	G =	J =
-------------------	-----	-----

PDC Process Development & Control, Inc.
 Imperial, PA
 DR: SRB DATE: 12/29/97
 CHK: RNK DATE: 8/9/2013
 APPR: DATE:
 EXCEL SERIES 40 SWING THRU BUTTERFLY VALVE
 WITH FLATTED POWER END SHAFT
 SCALE: 1=5 DWG. NO.: 401-009-002 REV. C