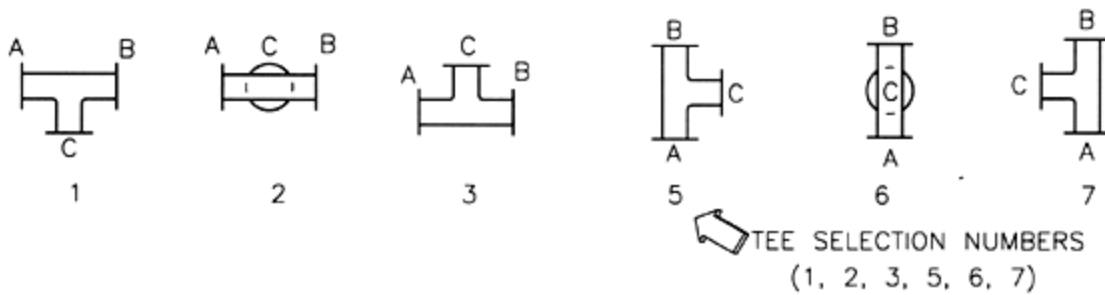


**PDC 3-Way Assemblies
Metal or Rubber Seated
125/150 Lb. Flanging**



PDC's 3-Way Assemblies are shipped as a complete unit, assembled, mounted and tested, ready for field installation. Two valves are mounted on a 125 lb. cast iron tee; one valve complete with power actuator the second valve controlled through connecting slave linkage. The valves are normally linked so that as one valve opens the other valve closes. The tee arrangement desired should be specified by indicating the appropriate tee position (1 through 7 below), and the placement of both the power valve and slave valve respectively as on:

Plan View



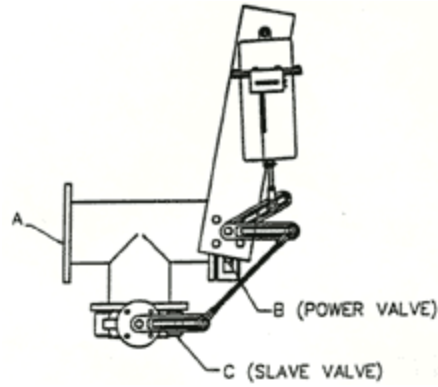
Selection Guidelines

1. Each port on tee is designated by A, B or C.
2. All tee arrangement numbers are based on plan view of the tee (i.e. looking down on tee and top of valve shaft as shown in example below).
3. Power valve (valve with actuator) is designated by the first letter after the tee selection number. Either A, B, or C.
4. All tee arrangements are based on the bracket for the power valve to be positioned at 12:00 o'clock in the plan view.

As an *example*, the plan views shown below are tee arrangement:

1. Tee Selection Number
- B. Power Valve
- C. Slave Valve

Plan View: Pneumatic



Plan View: Electric

