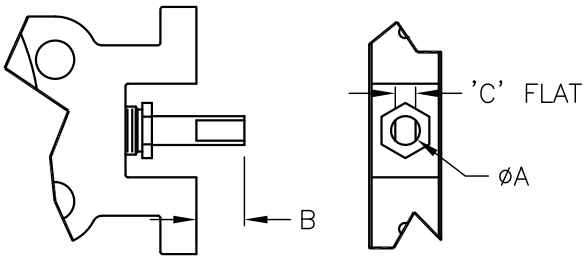


STANDARD SHAFT CONFIGURATIONS

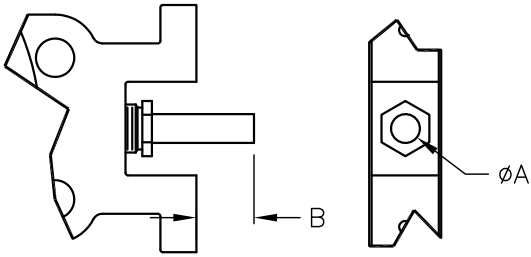
CONSULT FACTORY FOR CUSTOM OPTIONS

STANDARD FLAT SHAFT



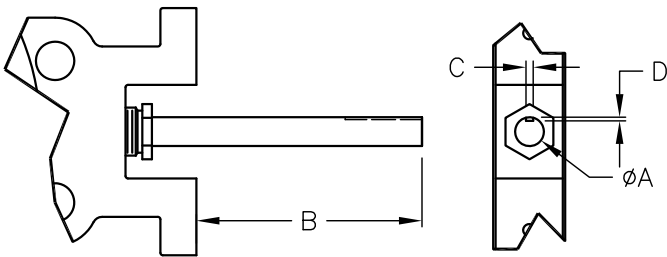
VALVE SIZE	A	B	C
2" - 8"(L)	.500	1.25	0.343
8" - 14"	.750	1.25	0.531
16" - 24"	1.000	1.25	0.625
26" - 30"	1.250	1.50	0.875
32" - 38"	1.500	1.75	1.125
40" - 48"	1.750	2.00	1.250
50" - 58"	2.000	2.50	1.375
60"	2.250	3.00	1.625

STANDARD ROUND SHAFT



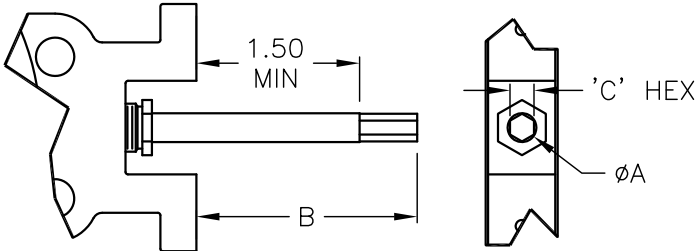
VALVE SIZE	A	B
2" - 8"(L)	.500	1.50
8" - 14"	.750	1.50
16" - 24"	1.000	3.00
26" - 30"	1.250	3.00
32" - 38"	1.500	3.00
40" - 48"	1.750	3.00
50" - 58"	2.000	3.00
60"	2.250	3.00

STANDARD KEYED SHAFT



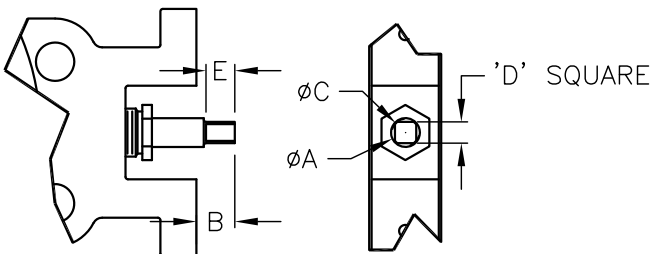
VALVE SIZE	A	B	C	D
2" - 8"(L)	.500	5.88	0.125	0.063
8" - 14"	.750	6.00	0.188	0.094
16" - 24"	1.000	6.13	0.250	0.125
26" - 30"	1.250	6.50	0.313	0.157
32" - 38"	1.500	6.50	0.375	0.188
40" - 48"	1.750	6.50	0.375	0.188
50" - 58"	2.000	6.50	0.500	0.250
60"	2.250	6.50	0.500	0.250

STANDARD HEX SHAFT



VALVE SIZE	A	B	C
2" - 3"	.500	5.13	0.406
4" - 8"(L)	.500	5.25	0.406
8" - 14"	.750	2.75	0.625
16" - 24"	1.000	5.75	0.750

STANDARD SQUARE SHAFT



VALVE SIZE	A	B	C	D	E
2" - 8"(L)	.500	1.00	0.469	0.354	0.75
8" - 14"	.750	1.00	0.700	0.551	0.75
16" - 24"	1.000	1.13	0.850	0.669	0.88