

PROCESS DEVELOPMENT & CONTROL LLC

1075 MONTOUR WEST INDUSTRIAL PARK
CORAOPOLIS, PENNSYLVANIA 15108

PHONE (724) 695-3440 ♦ FAX (724) 695-8635

**REPACKING PROCEDURES FOR (50mm-350mm) 2" THRU 14",
EXCEL SERIES 40 WAFER STYLE VALVE**

RELEASED: 2/27/84	ID #	APPROVED BY:	DATE:
REV.: 4 DATE: 5/12/94	EIB 10.4	SALES:	
		ENGINEERING:	

TABLE OF CONTENTS

REPACKING PROCEDURE

..... PAGES 1 & 2

PROCESS DEVELOPMENT & CONTROL LLC

ENGINEERING INSTRUCTION BULLETIN

EIB.: 10.4

ORIGINAL DATE: 2/27/84

PAGE: 1 OF 1

REVISION: 4

Date: 5/12/94

TITLE: REPACKING PROCEDURES FOR PDC EXCEL BUTTERFLY VALVES SERIES 40 2" THRU 14" VALVE SIZE

IMPORTANT: THERE ARE TWO STUFFING BOXES ON THE EXCEL SERIES 40 BUTTERFLY VALVE, THE STEPS BELOW SHOULD BE REPEATED FOR BOTH STUFFING BOXES.

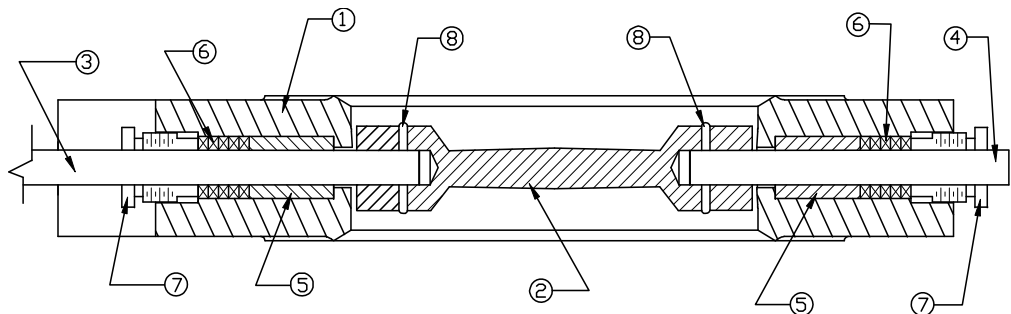
- 10.4.1 REMOVE PACKING NUT (ITEM #7) USING A COUNTER-CLOCKWISE ROTATION (SEE NOTE 1, BELOW). SLIDE PACKING NUT BACK TO GIVE ADEQUATE CLEARANCE.
- 10.4.2 REMOVE ALL RINGS OF PACKING (ITEM #6) WITH FLEXIBLE PACKING PICK (SEE NOTE 1. BELOW).
- 10.4.3 THOROUGHLY CLEAN OUT PACKING GLAND HOLE AND REMOVE ALL RESIDUE.
- 10.4.4 REPACK VALVE WITH NEW PACKING (ITEM #6) BY STAGGERING ALL RING ENDS 90° APART. PACKING MATERIAL SHOULD NOT EXTEND INTO THE THREADED PORTION OF THE STUFFING BOX, (SEE NOTE 2, BELOW).
- 10.4.5 REPLACE PACKING NUT (ITEM #7) BY HAND TIGHTENING (CLOCKWISE). ONCE THE PACKING NUT IS HAND TIGHT, USE THE PACKING NUT WRENCH TO TIGHTEN PACKING NUT AN ADDITIONAL ½ TURN. THIS ADDITIONAL ½ TURN PAST HAND TIGHT SEATS THE RINGS OF PACKING (SEE NOTE 3, BELOW).
CAUTION: DO NOT OVER TIGHTEN PACKING NUT.

NOTES:

1. A SPECIAL PDC REPACKING TOOL KIT CONSISTING OF A PACKING NUT WRENCH AND A FLEXIBLE PICK IS AVAILABLE FROM THE FACTORY. EMPLOYMENT OF THIS KIT WILL GREATLY FACILITATE THE REPACKING PROCEDURE AND ITS PURCHASE IS RECOMMENDED.
2. EACH REPACKING SET CONSISTS OF EXTRA RINGS OF PACKING. HOWEVER, IN MOST CASES, (5) FIVE RINGS OF PACKING SHOULD BE SUFFICIENT FOR EACH STUFFING BOX. (**DO NOT USE MORE RINGS THAN WERE REMOVED**).
3. IT MAY BE NECESSARY TO READJUST THE PACKING NUT WHEN THE SYSTEM IS STARTED UP. IF IT IS NECESSARY TO ADJUST THE PACKING NUT, TIGHTEN ¼ TURN. OPERATE FOR 15 MINUTES. IF LEAKAGE PERSISTS AFTER 15 MINUTES CONTINUE TO TIGHTEN ¼ TURN AND OPERATE FOR 15 MINUTES. (REPEAT THIS PROCESS UNTIL LEAKAGE STOPS). **CAUTION: DO NOT OVER TIGHTEN THE PACKING NUT.**

TABLE OF CONTENTS

1. VALVE BODY
2. DISC
3. POWERSHAFT
4. IDLESHAFT
5. INBOARD BUSHING
6. PACKING
7. PACKING NUT
8. PIN



PROCESS DEVELOPMENT & CONTROL LLC

ENGINEERING INSTRUCTION BULLETIN

EIB.: 10.4

ORIGINAL DATE: 2/27/84

PAGE: 1 OF 1

REVISION: 4

Date: 5/12/94

**TITLE: REPACKING PROCEDURES FOR PDC EXCEL BUTTERFLY VALVES SERIES 40
2" THRU 14" VALVE SIZE**

**THE FOLLOWING PROCEDURES ARE INTENDED FOR USE WHEN IT IS DESIRED TO
REPLACE ASSEMBLIES WHICH INCLUDE A WIPER PACKING RING
(DIRTY SERVICE OR WASTE GATE VALVE ASSEMBLIES)**

- 10.4.6 BEFORE CLEANING PACKING GLAND HOLE AND REPACKING (10.4.3 & 10.4.4) FROM PREVIOUS PAGE, THE FOLLOWING SEQUENCE MUST BE COMPLETED.
- 10.4.7 REMOVE VALVE FROM PIPELINE. REMOVE THE TAPERED PINS (ITEM #8 FROM PREVIOUS PAGE), BY KNOCKING THEM OUT USING A HAMMER WITH A STARTER PUNCH.
- 10.4.8 REMOVE THE SHAFTS, POWERSHAFT AND IDLESHAFT (ITEMS #3 & #4), BY PULLING THEM THRU THE STUFFING BOX OPENING WHILE ALSO RELEASING AND REMOVING THE DISC.
- 10.4.9 REMOVE INBOARD BUSHING (ITEM #5) AND WIPER PACKING (ITEM #9) BY PUSHING THEM THROUGH THE STUFFING BOX CAVITY FROM THE BORE OF THE VALVE.
- 10.4.10 CLEAN PACKING GLAND AS IN PROCEDURE 10.4.3 FROM PREVIOUS PAGE.
- 10.4.11 REPLACE WITH A NEW WIPER RING (ITEM #9) AND NEW INBOARD BUSHING (ITEM #5) THEN CONTINUE WITH THE REPACKING PROCEDURE AS DESCRIBED IN 10.4.4 FROM THE PREVIOUS PAGE.

TABLE OF CONTENTS:

1. VALVE BODY
3. POWERSHAFT
5. INBOARD BUSHING
6. PACKING
7. PACKING NUT
9. WIPER PACKING RING

