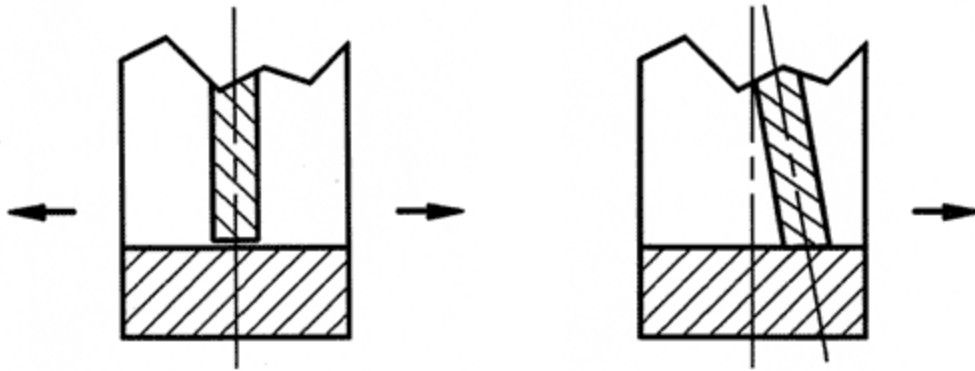


**Seat Options**

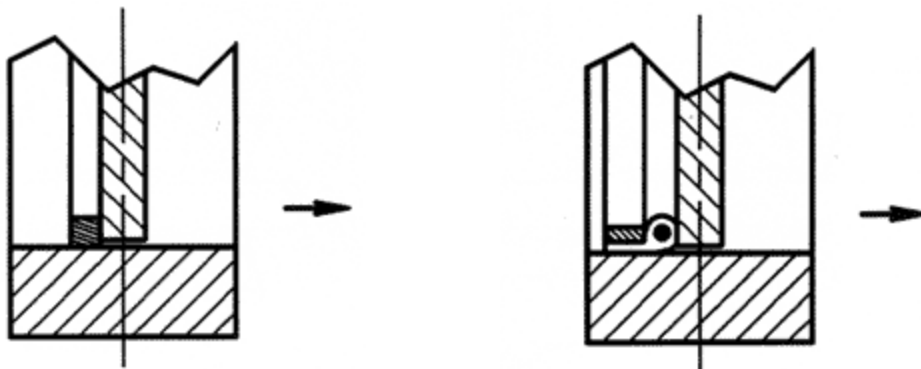


**Swing Thru**

Suitable for most applications, this type is furnished as standard. Good for clean or dirty service, any temperature range. Clearance depends upon temperature. (Available in all sizes.)

**Angle**

Clockwise to close is standard. Suitable for minimum leakage where service conditions are clean, and temperature is under 500°F, (Available up to 30 inch sizes.)



**Metal Step**

Clockwise to close is standard. Suitable for minimum leakage requirements above 500°F, provided service conditions are clean. (Available in all sizes.)

**Tadpole Step**

Clockwise to close is standard. Suitable for minimum leakage requirements up to 1200°F, depending on various materials available, and provided service conditions are clean. Slightly better shut-off than metal step seat. (Available in sizes starting at 6" and up.)