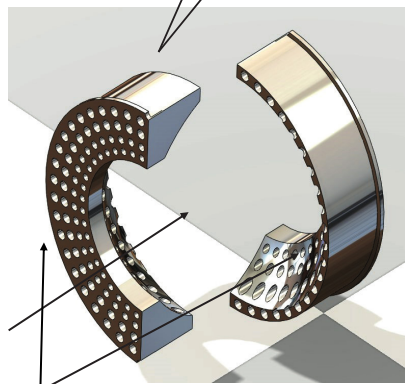
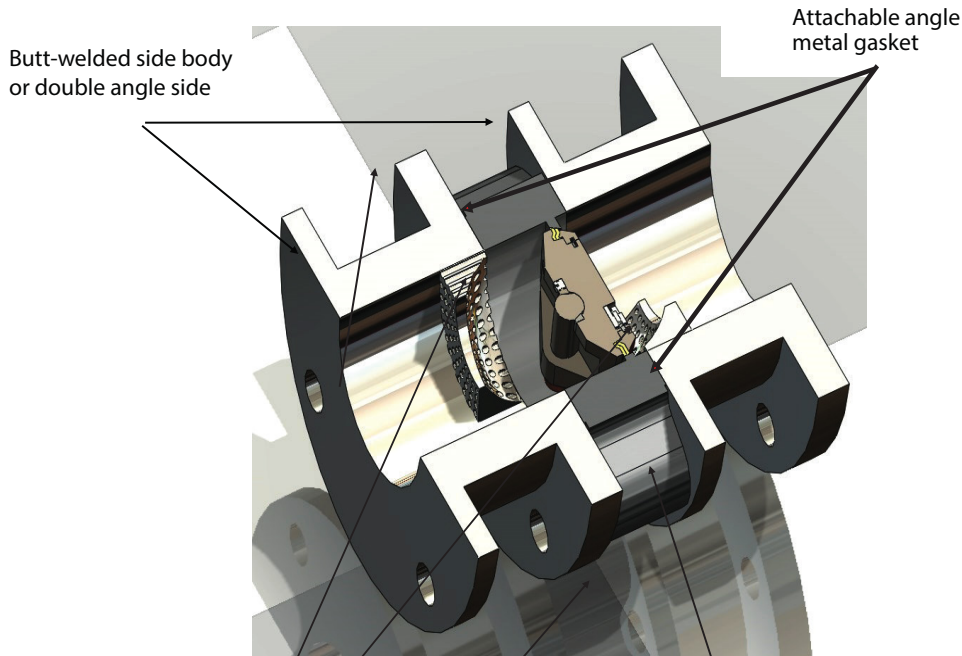
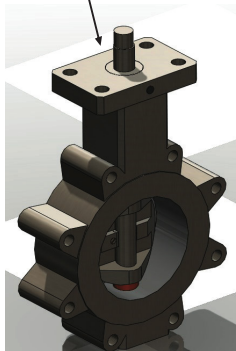


DESIGN FEATURES 1-8

# Universal 3-pc. Body - *Allite*<sup>®</sup> Seal



Left and right *Cavfree*<sup>®</sup> trim



The lugged body as a main body

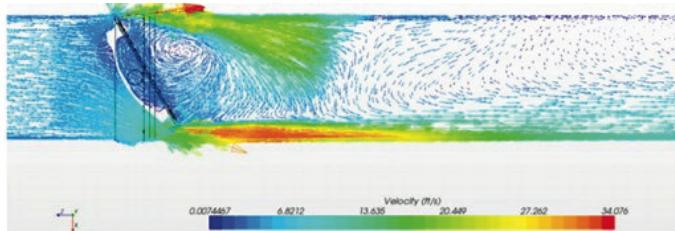


Fig. 6.9: Detailed top view of velocity vectors across the butterfly valve for the 30 degree open case.

CFD simulation

- **The Unique 3-pc. Universal Body:** Has a base lugged body and can be used alone or combined with our Universal 3-pc. body adapters. PDC also offers a special butt weld adapter, allowing the valves to be repaired without interfering with the weld connections. Our Universal 3-pc. body can adapt to any face-to-face configuration.

- **New *Allite*<sup>®</sup> Pressure-Assisted Gasket –** Series 67<sup>®</sup> 3-pc. body employs a newly patented high-pressure alloy gasket capable of handling temperatures over 1800°F. The new *Allite*<sup>®</sup> gasket seal is formed between body flanges during installation and attaches to both flanges with a wedge joint and PDC's special "W" seal. Even with high-temperature changes or pressure surges, the flanges maintain their seal. The *Allite*<sup>®</sup> gaskets are not reusable. The huge advantage of the new *Allite*<sup>®</sup> gasket is the ability to repair valves in-line and replace butt welded valves in any pressure class regardless of their take out.

- ***Cavfree*<sup>®</sup> Trim -** The *Cavfree*<sup>®</sup> trim limits cavitation conditions and erosion by efficiently optimizing flow. When the valve disc is positioned between 10°-60° the incoming flow is divided, each stream is conditioned by the right and left trim piece. The flow capacity is merely reduced by 30%.

- **Catalytic Trim -** Optional patented trim for service in high temperature exhaust applications to reduce "NOX from" used flare applications.